

# MONTHLY MANAGEMENT REPORT

January 2005



Family and Social Services Administration  
Division of Family Resources  
and  
Department of Child Services



**Mitchell E. Daniels, Jr.**  
Governor

**E. Mitchell Roob Jr.**  
Secretary  
Family and Social  
Services Administration

**James F. Robertson**  
Director Division of  
Family Resources

**James W. Payne**  
Director Department of  
Child Services

For question or to obtain a hard copy of this report contact:  
DMRA@fssa.state.in.us  
County Reports are found on FSSA web page  
[www.in.gov/fssa/statistics/](http://www.in.gov/fssa/statistics/)

All data presented in this report was collected at the end of the reporting month.

State of Indiana  
Family and Social Services Administration  
Division of Family Resources

**Monthly Management Report**  
**Statewide**  
**January 2005**

TEMPORARY ASSISTANCE FOR NEEDY FAMILIES (TANF)		Source: FSSA Reports Statistics, ICES		
<b>TANF - REGULAR</b>				
	<b>January 2005</b>	<b>December 2004</b>	<b>January 2004</b>	<b>Annual Change</b>
Number of families receiving TANF grants	43,843	44,343	44,720	-1.96%
Total number of grant recipients	119,247	120,525	122,275	-2.48%
Number of adult grant recipients	36,167	36,629	37,071	-2.44%
Number of child grant recipients	83,080	83,896	85,204	-2.49%
Total payments	\$9,086,581	\$9,208,570	\$9,254,975	-1.82%
Average payment per case	\$207.25	\$207.67	\$206.95	0.14%
Average payment per person	\$76.20	\$76.40	\$75.69	0.67%
Number of TANF cases with benefits reduced to zero	5,062	5,124	6,191	-18.24%
Number of TANF recipients with benefits reduced to zero	15,154	15,362	18,576	-18.42%
Number of adult recipients	4,980	5,032	6,083	-18.13%
Number of child recipients	10,174	10,330	12,493	-18.56%
<b>TANF - UNEMPLOYED PARENT</b>				
Number of families receiving TANF-UP grants	2,154	2,123	2,790	-22.80%
Number of recipients receiving TANF-UP grants	9,414	9,341	12,232	-23.04%
Number of adult grant recipients	4,304	4,243	5,573	-22.77%
Number of child grant recipients	5,110	5,098	6,659	-23.26%
Total payments	\$576,780	\$575,248	\$724,049	-20.34%
Average payment per case	\$267.77	\$270.96	\$259.52	3.18%
Average payment per person	\$61.27	\$61.58	\$59.19	3.51%
Number of TANF-UP cases with benefits reduced to zero	304	338	522	-41.76%
Number of TANF-UP recipients with benefits reduced to zero	1,331	1,488	2,292	-41.93%
Number of adult recipients	605	673	1,044	-42.05%
Number of child recipients	726	815	1,248	-41.83%

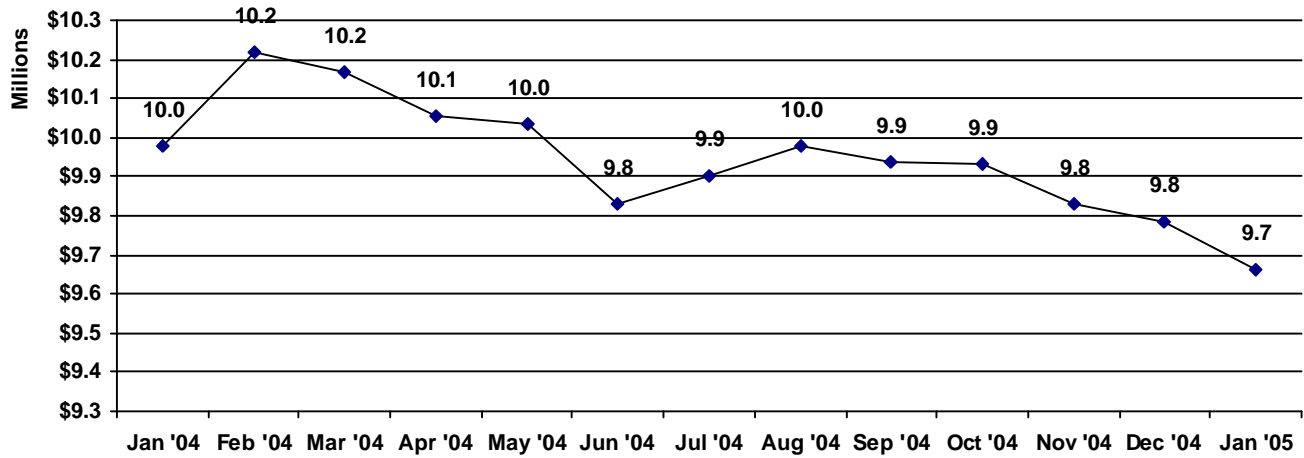
All data presented in this report was collected at the end of the reporting month.

## Monthly Management Report

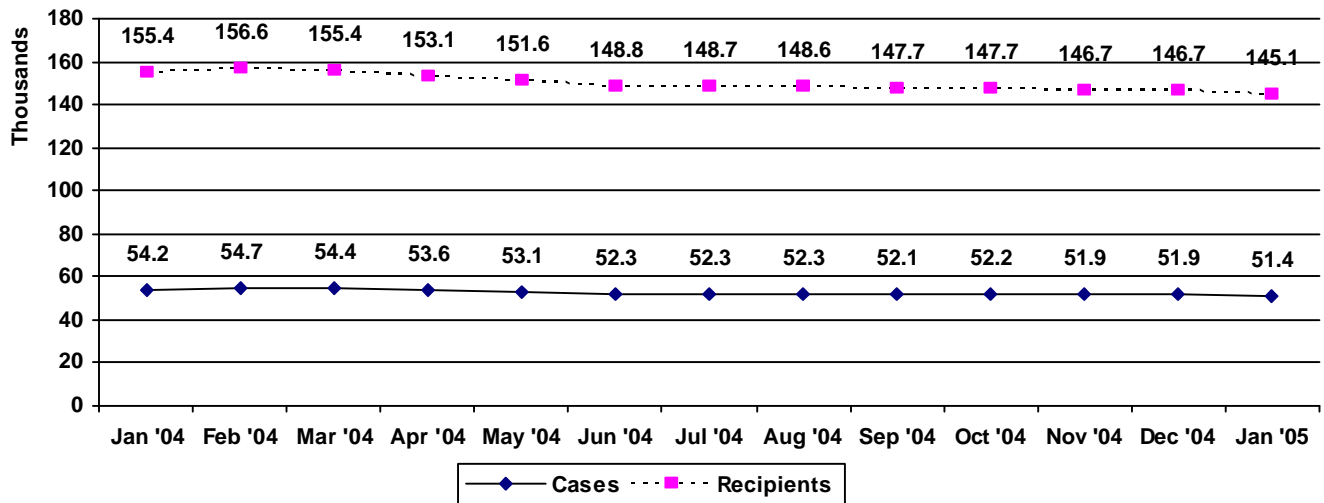
Statewide  
 January 2005

TEMPORARY ASSISTANCE FOR NEEDY FAMILIES (TANF)	Source: FSSA Reports Statistics, ICES
--	---------------------------------------

**TANF Regular And TANF UP Cash Assistance**



**TANF Cases and Recipients  
 (TANF Regular and TANF UP)**



All data presented in this report was collected at the end of the reporting month.

State of Indiana  
Family and Social Services Administration  
Division of Family Resources

**Monthly Management Report**  
**Statewide**  
**January 2005**

<b>FOOD STAMPS</b>		Source: FSSA Reports Statistics, ICES			
	January 2005	December 2004	January 2004	Annual % Change	
Total stamps issued	\$52,636,334	\$52,034,759	\$44,719,440	17.70%	
Number of households receiving stamps	240,070	237,633	221,856	8.21%	
Number of recipients	557,686	552,835	521,174	7.01%	
Average stamps per household	\$219.25	\$218.97	\$201.57	8.77%	
Average stamps per recipient	\$94.38	\$94.12	\$85.81	10.00%	

<b>FOOD STAMPS ERROR RATES</b>		Source: FSSA Reports Statistics, ICES			
	October 2004	September 2004	August 2004	Cumulative FFY 2004	
FFY Cumulative Positive Error Rate	4.82%	5.74%	5.94%	5.74%	
Monthly Positive Error Rate	4.82%	3.62%	6.34%	NA	
FFY Cumulative Negative Error Rate	3.08%	5.20%	5.43%	5.20%	
Monthly Negative Error Rate	3.08%	3.13%	3.66%	NA	

Error Rate data is unregressed

**All data presented in this report was collected at the end of the reporting month.**

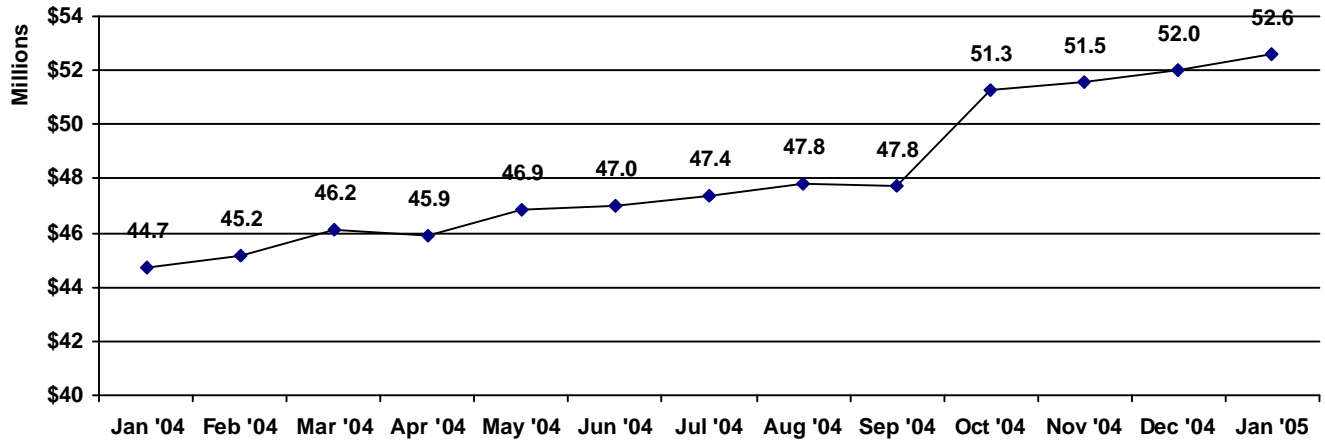
Prepared by:  
Office of Data Management, Reports, and Analysis  
Wednesday, March 23, 2005

**Monthly Management Report**  
 Statewide  
 January 2005

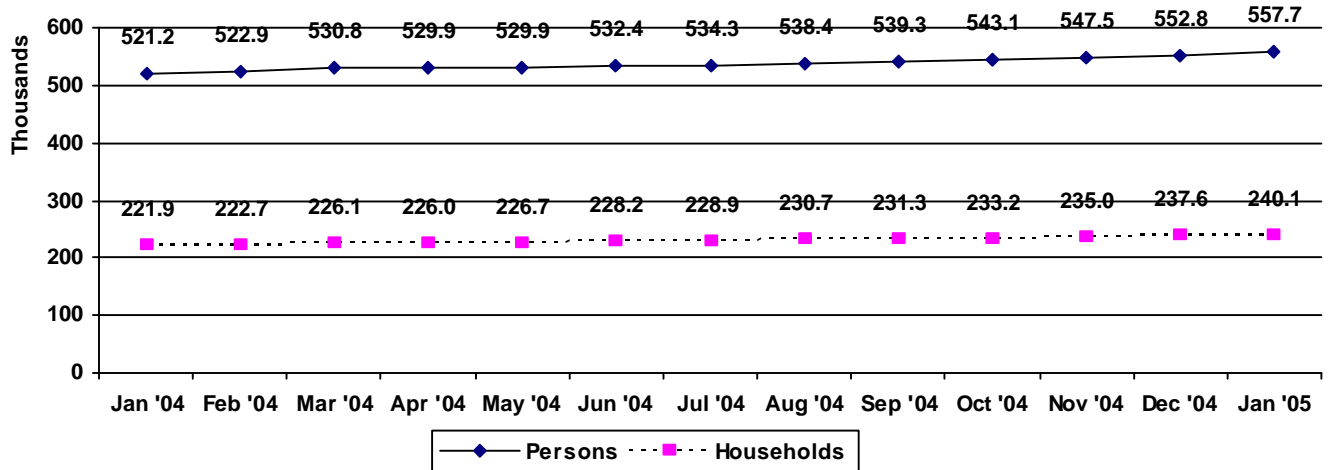
FOOD STAMPS

Source: FSSA Reports Statistics, ICES

**Food Stamps Issued**



**Food Stamps Households and Recipients**



All data presented in this report was collected at the end of the reporting month.

State of Indiana  
Family and Social Services Administration  
Division of Family Resources

## Monthly Management Report

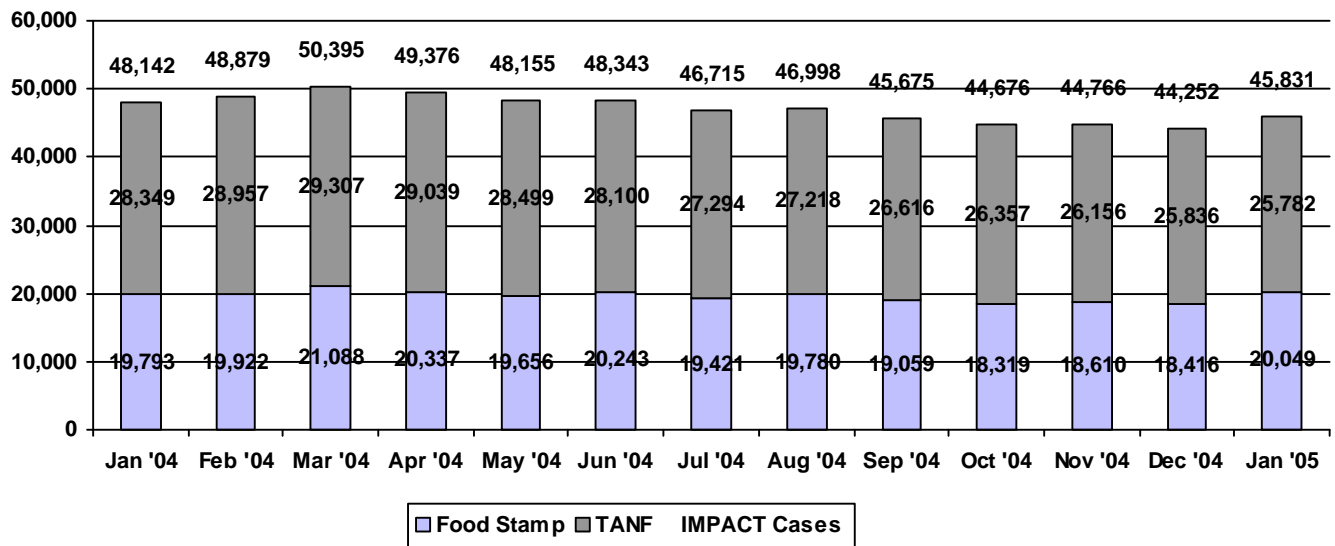
### Statewide

### January 2005

**IMPACT** Source: FSSA Reports Statistics; FSSA Data Warehouse Project (Employed data)

	January 2005	December 2004	January 2004	Annual % Change
Number of IMPACT cases (See IMPACT note)	45,831	44,252	48,142	-4.80%
Number of TANF IMPACT Cases	25,782	25,836	28,349	-9.05%
Number of Food Stamp Cases	20,049	18,416	19,793	1.29%
Total number of adults employed	2,135	2,356	2,552	-16.34%
Number of TANF IMPACT adults employed	1,354	1,585	1,380	-1.88%
Number of Food Stamp adults employed	781	771	1,172	-33.36%
Total number of adults ineligible due to employment	916	965	963	-4.88%
Number of TANF adults	333	322	379	-12.14%
Number of Food Stamp adults	583	643	584	-0.17%

**IMPACT Caseloads**



Prior to October 2003, IMPACT caseloads did not include Employed or Sanction clients. Beginning October 2003, ICES programming changes allowed the capturing of this data.

All data presented in this report was collected at the end of the reporting month.

Prepared by:  
Office of Data Management, Reports, and Analysis  
Wednesday, March 23, 2005

State of Indiana  
Family and Social Services Administration  
Division of Family Resources

**Monthly Management Report**  
**Statewide**  
**January 2005**

<b>CHILD CARE</b>	Source: DFR Child Development, CCDF-Prodnew			
	January 2005	December 2004	January 2004	Annual % Change
Total Subsidized Child Care Payments	\$8,968,843	\$9,377,244	\$11,201,911	-19.93%
CCDF Child Care Voucher Payments	\$8,455,337	\$8,976,613	\$10,508,928	-19.54%
CCDF Child Care Contract Payments	\$513,506	\$400,631	\$692,983	-25.90%
Number of CCDF Children	29,814	30,409	33,475	-10.94%
Number of Licensed Child Care Homes	3,074	3,111	4,038	-23.87%
Licensed Capacity of Child Care Homes	36,934	37,344	46,106	-19.89%
Number of Licensed Child Care Centers	616	617	677	-9.01%
Licensed Capacity of Child Care Centers	61,370	61,423	63,001	-2.59%
Number of Registered Ministries(Capacity not regulated)	646	652	554	16.61%

All data presented in this report was collected at the end of the reporting month.

Prepared by:  
Office of Data Management, Reports, and Analysis  
Wednesday, March 23, 2005

## Monthly Management Report

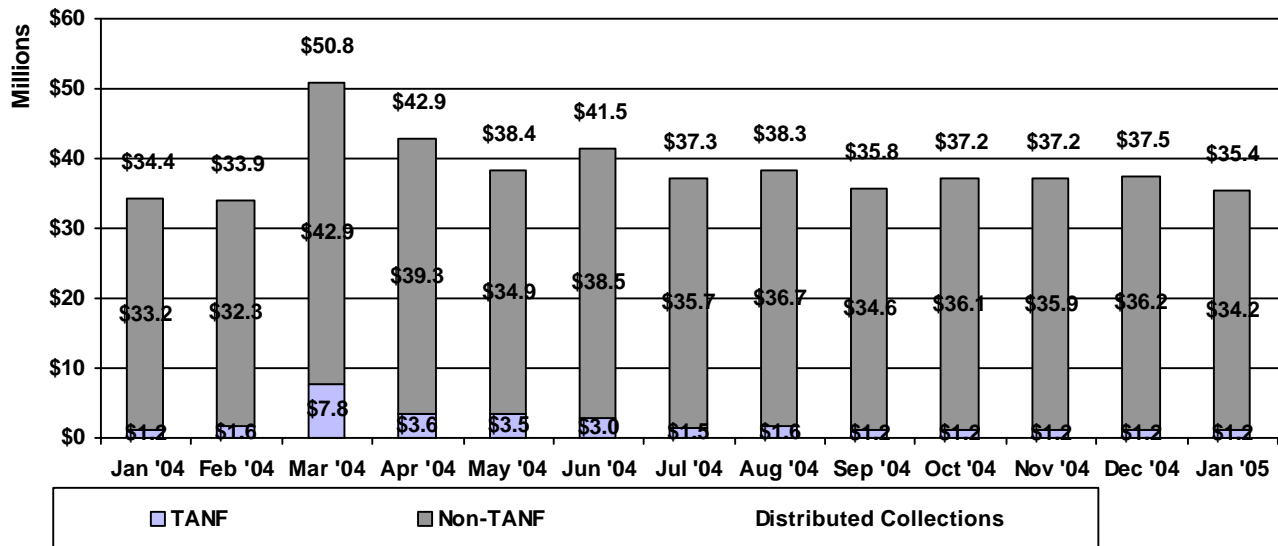
Statewide  
January 2005

### CHILD SUPPORT

Source: FSSA Financial Management, ISETS

	January 2005	December 2004	January 2004	Annual Change
Total Distributed Collections	\$35,420,778	\$37,484,411	\$34,423,322	2.90%
TANF Distributed Collections	\$1,184,604	\$1,237,624	\$1,233,757	-3.98%
Non TANF Distributed Collections	\$34,236,174	\$36,246,787	\$33,189,566	3.15%

### Child Support Distributed Collections



### CHILD SERVICES

Source: DCS - ICWIS

	January 2005	December 2004	January 2004
Total number of children with substantiated child abuse	705	631	672
Children with Physical Abuse	300	272	273
Children with Sexual Abuse	405	359	399
Total number of children with substantiated child neglect	1,065	1,054	1,121
Total number of children with indicated child abuse	58	68	
Children with Physical Abuse	28	28	
Children with Sexual Abuse	30	40	
Total number of children with indicated child neglect	109	69	

A child may be counted more than one time and/or in more than one category. Therefore, this is a duplicate count. These numbers include Institutional Investigations.

Indicated status became effective July 1, 2004

All data presented in this report was collected at the end of the reporting month.

Prepared by:

Office of Data Management, Reports, and Analysis

Wednesday, March 23, 2005



## Monthly Management Report Definitions of Elements

### TANF

*The Temporary Assistance for Needy Families (TANF) Program provides cash payments to eligible families with children.*

#### TANF Regular

##### Number of Families

Total number of households or family units participating in TANF- Regular and TANF-I (Incapacitated Parent). It does not include TANF - UP (Unemployed Parent).

##### Recipient

A person receiving TANF benefits. There may be more than one recipient in a TANF case.

"**Adult**" recipient is a person 21 years or older or a person 18 or over with at least one child.

"**Child**" recipient is an unmarried person under 18 deprived of parental support and living with a specified relative.

##### Payments

Total cash assistance dollars paid to TANF recipients during the month.

##### Average payment per Case

Total TANF payments divided by the number of TANF cases receiving a grant. A "case" is a household or family unit participating in TANF- Regular and TANF-I (Incapacitated Parent). It does not include TANF - UP (Unemployed Parent).

##### Average payment per Recipient

Total TANF payments divided by the number of TANF recipients receiving a grant.

##### Cases with benefits reduced to zero

TANF families whose cash assistance has been reduced to zero due to income or penalty.

### TANF UP (Unemployed Parent Program)

#### Number of Families

Total number of households or family units participating in TANF UP.

#### Recipient

A person receiving TANF benefits. There may be more than one recipient in a TANF case.

"**Adult**" recipient is a person 21 years or older or a person 18 or over with at least one child.

"**Child**" recipient is an unmarried person under 18 deprived of parental support and living with a specified relative.

#### Payments

Total cash assistance dollars paid to TANF recipients during the month.

#### Average payment per Case

Total TANF payments divided by the number of TANF cases receiving a grant. A "case" is a household or family unit participating in TANF UP.

#### Average payment per Recipient

Total TANF payments divided by the number of TANF recipients receiving a grant.

#### Cases with benefits reduced to zero

TANF families whose cash assistance has been reduced to zero due to income or penalty.

All data presented in this report was collected at the end of the reporting month.

## Monthly Management Report Definitions of Elements

### Food Stamps (FS)

*Indiana's Food Stamp Program helps eligible low income families supplement their food purchasing dollars with food stamp coupons.*

#### **Total Stamps Issued**

Dollar value of total food stamps issued during the month.

#### **Total Households**

The number of households participating in the FS program.

#### **Total Persons**

The number of persons participating in the FS program.

#### **Average Stamps per Household**

The total value of food stamps divided by the number of households.

#### **Average Stamps per Person**

The total value of food stamps divided by the total number of recipients.

#### **Positive Error Rate**

Dollars paid in error divided by total dollars.

#### **Negative Error Rate**

Number of erroneously closed or denied cases divided by total number of cases in sample.

#### **Unregressed**

Error rate reported by the state before the federal agency has accepted and finalized the results. This rate is subject to revision.

### Employment and Training

*IMPACT assists TANF/Food Stamp families to become self-sufficient by helping to provide education, training, and job opportunities and overcoming personal barriers to employment.*

#### **Total IMPACT Cases**

The total number of active cases with IMPACT activities during the month.

#### **IMPACT-TANF**

The number of active TANF cases with IMPACT activities during the month.

#### **IMPACT-Food Stamp**

The number of active Food Stamp cases with IMPACT activities during the month.

#### **Total Adults Employed**

The total number of IMPACT adults employed during the month.

#### **TANF Adults Employed**

The total number of TANF-IMPACT participants that were reported employed during the month.

#### **Food Stamp Adults Employed**

The total number of FS-IMPACT participants that were reported employed during the month.

#### **Total Adults ineligible due to employment**

The total number of IMPACT adults cases closed during the month because of income from employment.

All data presented in this report was collected at the end of the reporting month.

## Monthly Management Report Definitions of Elements

### Child Care

*Indiana's child care program provides child caring services reimbursement to eligible families participating in IMPACT, transitioning out of the TANF program, or are low income families at risk of becoming eligible for TANF.*

#### **Total Subsidized Child Care Payments**

The total value of Child Care Development Fund (CCDF) Child Care Voucher Payments and CCDF Child Care Contract Payments.

#### **Licensed Capacity of Child Care Homes**

The number and licensed capacity of licensed day care homes.

#### **Licensed Capacity of Child Care Centers**

The number and licensed capacity of licensed day care centers.

#### **Registered Ministries**

The number of registered ministries with child caring facilities. The capacity of registered ministries is not regulated.

### Child Support (CS)

*Indiana's Child Support Program provides 4 services: Establishment of paternity, Establishment of support orders, Enforcement of support orders, and Location of absent parents.*

#### **Total Distributed Collections**

Total dollar amount of CS collections, including TANF and non-TANF receipts, which were distributed during the month.

#### **TANF Distributed Collections**

Receipts collected on behalf of current and former TANF participants.

### Child Welfare

*Indiana's Department of Child Services, through the local County DFR Offices, serves all children in the state at risk of abuse or neglect.*

#### **Total Substantiated Abused Children**

The total number of children with substantiated child abuse.

#### **Physical Abuse**

The total number of children with substantiated physical child abuse during the month.

#### **Sexual Abuse**

The total number of children with substantiated sexual child abuse during the month.

#### **Total Substantiated Neglect Children**

The total number of children with substantiated child neglect during the month.

#### **Total Indicated Abused Children**

Indicated is used when child abuse reports are made and there is not enough evidence to substantiate or unsubstantiate the abuse but there is reason to suspect a child may have been abused or is at risk for abuse.

#### **Total Indicated Neglect Children**

Indicated is used when child neglect reports are made and there is not enough evidence to substantiate or unsubstantiate the neglect but there is reason to suspect a child may have been neglected or is at risk for neglect.

In all Child Welfare data, a child may be counted more than one time and/or in more than one category. Therefore, this is a duplicate count. These numbers include Institutional Investigations.

All data presented in this report was collected at the end of the reporting month.

## Monthly Management Report Definitions of Elements

### Data Source Systems

#### **CCDF – Prodnew**

State and contractor developed database collecting child care services data.

#### **FSSA Data Warehouse**

A data coordinating entity established to prepare federal TANF reports.

#### **ICES**

Indiana Client Eligibility System is a federally certified online, integrated, eligibility system that supports the administration of TANF, Food Stamps, IMPACT, and Medicaid Eligibility.

#### **ICWIS**

Indiana Child Welfare Information System provides Indiana with child protection services intake and case management capabilities as well as data collection for Federal reporting.

#### **ISETS**

Indiana Support Enforcement Tracking System is a federally mandated system to assist county clerks and prosecutors in enforcing and tracking child support orders.

**All data presented in this report was collected at the end of the reporting month.**